

Visit www.liveunited.us to learn more about additional services and programs United Way provides.



Our highest giving per capita businesses are recognized with a trophy they can display for the year at their place of business to show others how much they have contributed and worked to change our community. A plaque with your business name will be placed on the trophy to be forever recognized.

Current Winners:

Small Business Winner: Bank of Hays

Large Business Winner: Midwest Energy

BOARD OF DIRECTORS

Korinna Parker—President
Amy Schaffer—Vice President
Ryan Scheck—Treasurer
Niki Clark—Secretary
Rachel Augustine
Erin Giebler
Jennifer Harmon
George Harms
Justin Greenleaf
Jason Kennedy
Becky Kiser
Nancy Jeter
Lisa Keever
Kelly Lewis
Brendan Mackay
Cindy Strube

Jeter Turner Sook Baxter LLP
Fort Hays State University
Adams Brown
Nex-Tech
Sunflower Bank
City of Hays
Adams Brown
Hays Med
Fort Hays State University
Astra Bank
Eagle Radio
Wonder Women League
Empire Bank
Bank of Hays
Ellis County
Midwest Energy

P.O. Box 367, Hays KS 67601 • 785-628-8281

liveunited.us  /unitedwayofelliscounty  @UWofEllisCounty



Neighbors HELPING Neighbors





Dear United Way Supporter,

United Way of Ellis County would like to thank you for a successful 2021 campaign. Because of your contribution we were able to serve individuals in Ellis County who need the many services provided by our partner agencies. United Way of Ellis County would not be able to support the community and the several agencies if it were not for residents like you who step up to help. It comes to show that **United** we can build a prosperous community where everybody thrives.

Although we are a strong community, the work is not finished. There are many individuals and families in Ellis County who still need resources and services. Therefore, we would like to invite you to give for our 2022 campaign. You can give in monetary ways or simply by volunteering. United Way would be grateful to receive your help in any way.

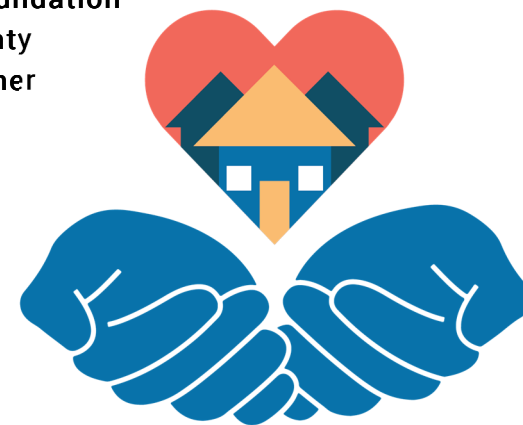
At United Way, we aim to create a strong foundation in education, health, and finance. We believe that these three areas are the building blocks for a good quality of life and a strong community. Additionally, all money donated to the United Way will fund projects and services made to serve Ellis County residents. The CARE Council works diligently to make sure the funds are allocated appropriately to the agencies and the money stays in Ellis County.

Please help us leave a positive mark on our community. Help us make a difference in the lives of your neighbors. Remember, the smallest contribution or simply volunteering can make a difference in someone's life. Be a part of the mission and vision of United Way by leaving your mark in our 2022 campaign.

"A kind gesture can reach a wound that only compassion can heal." – Steve Maraboli

PARTNER AGENCIES

Western Kansas Association on the Concerns of the Disabled
Developmental Services of Northwest Kansas
Western Kansas Child Advocacy Center
Cerebral Palsy Research Foundation
Cancer Council of Ellis County
Parents and Children Together
Center for Life Experience
Big Brothers Big Sisters
CASA of the High Plains
American Red Cross
Hays Senior Center
Catholic Charities
First Call For Help
Salvation Army
Options



WAYS TO GIVE

One-Time Donation:

Online at liveunited.us, send a check to PO Box 367 Hays KS, or Venmo (@United-Way-of-Ellis-County).

On-Going Donations:

Set up monthly donations at liveunited.us or ask your employer to make a donation through payroll deduction.

Round-Up Donations:

Connect a credit or debit card to round-up your purchases to the next dollar and donate your change. Set this up at liveunited.us.

Volunteer:

At nwksvolunteers.org, connect with organizations looking for volunteers.